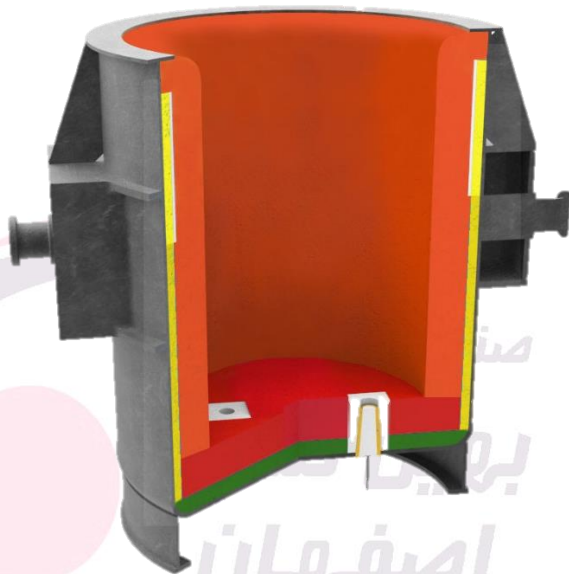




Steel Transport Ladle



Well Block & Slide Gate Mortar

Behin Well Block 85 to 95

Behin Mor 85 G, 80 MP, 85 C

Working Lining

Behin Cast 70 to 95 MC

Behin Cast 70 to 95 LC

Side Wall Safety Lining

Behin Cast 70 to 95 MC

Behin Cast 70 to 95 LC

Safety Lining

Behin Cast 70 to 95 MC

Behin Cast 70 to 95 LC

Floor

Behin Cast 70 to 95 MC

Behin Cast 70 to 95 LC

Behin Ram STG

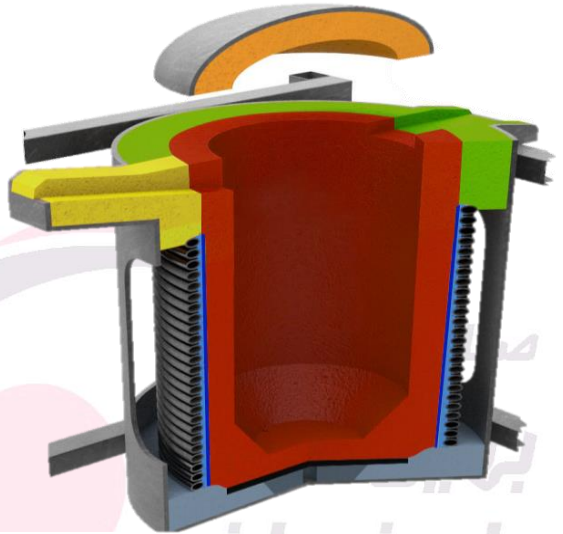
Behin Ram CIG

Behin Ram CUG

Behin Ram LDG



**Coreless
Induction
Furnace (CIF)**



Cover

Behin Cast 50 to 70 MC

Behin Cast 50 to 70 LC

Behin Cast 50 to 70 RC

Tap Ring

Behin Cast 60 to 70 MC

Behin Cast 60 to 70 LC

Behin Block 60 to 80

Spout

Behin Cast 60 to 70 LC

Behin Cast 60 to 70 RC

Behin Plast 65 to 90

Working Lining

Behin Ram STG

Behin Ram CIG

Behin Ram CUG

Behin Ram LDG

Coil Grout

Behin Coat 50 to 94

Bottom Block

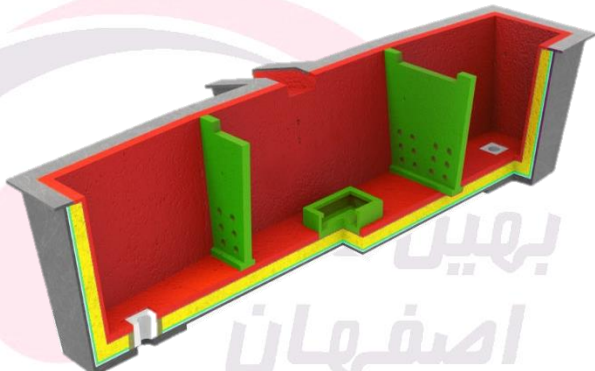
Behin Cast 60 to 85 MC

Behin Cast 60 to 85 LC

Behin Block 60 to 80



Tundish



Impact & Dam

Behin Cast 70 to 85 MC

Behin Cast 70 to 85 LC

Roof

Behin Cast 70 to 90 MC

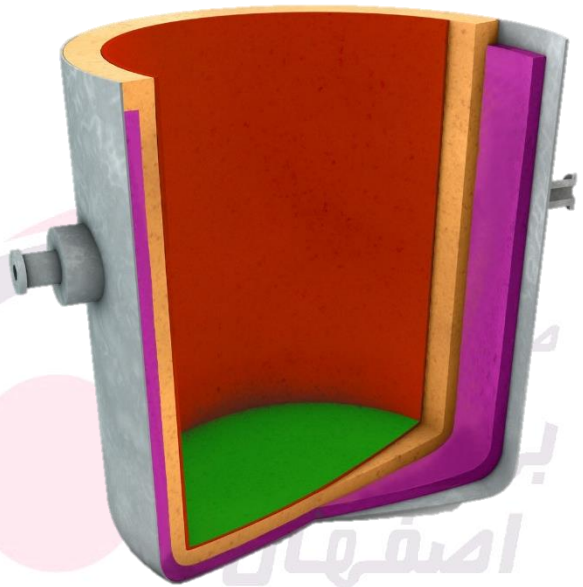
Behin Cast 70 to 90 LC

Insulation

Behin Cast 30 to 35 INS



Iron Transport Ladle



Edge Patching

Behin Silica Plast

Behin Cast 50 to 70 RC

Working Lining

Behin Cast 70 to 85 MC

Behin Ram STG

Behin Ram CIG

Behin Ram CUG

Behin Ram LDG

Insulation

Behin Cast 30 to 35 INS

Floor

Behin Cast 70 to 85 MC

Behin Silica Plast

Behin Ram STG

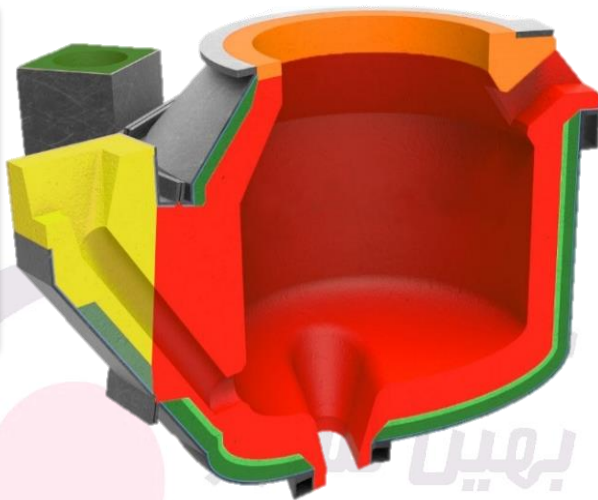
Behin Ram CIG

Behin Ram CUG

Behin Ram LDG



Holding Furnace



Top Ring

Behin Cast 60 to 70 MC

Bottom Block

Behin Cast 80 to 85 MC

Floor

Behin Cast 95 to 97 LC

Behin Ram STG

Behin Ram CIG

Behin Ram CUG

Behin Ram LDG

Receiver Spout

Behin Cast 60 to 70 MC

Pour Spout

Behin Cast 80 to 95 MC

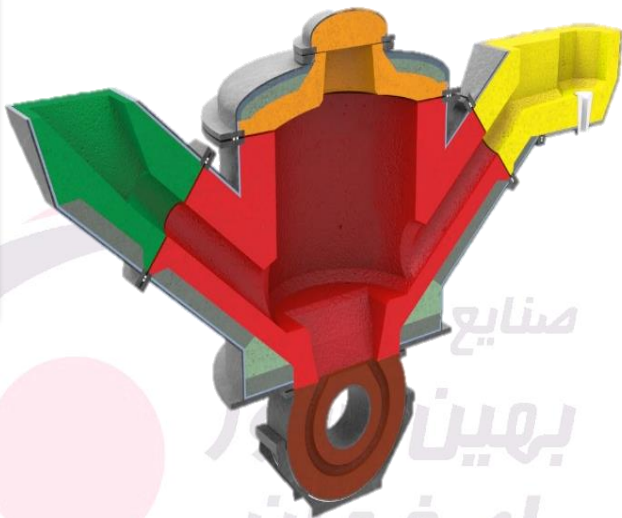
Behin Cast 80 to 95 LC

Coil Grout

Behin Coat 65 to 94



Pouring Furnace



Inlet

Behin Cast 70 to 95 MC

Behin Cast 70 to 95 LC

Working Lining

Behin Cast 85 to 97 LC

Outlet

Behin Cast 70 to 95 MC

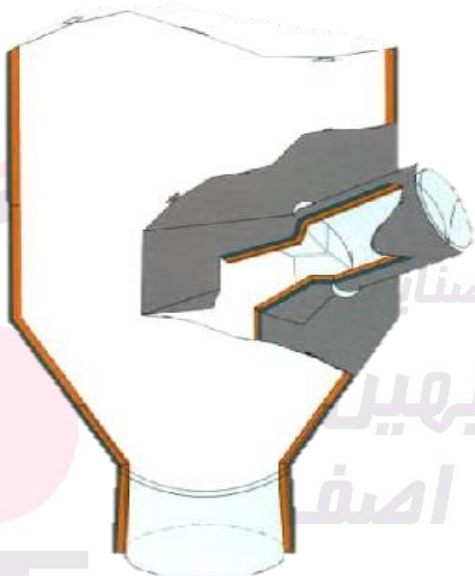
Behin Cast 70 to 95 LC

Cover

Behin Cast 60 to 75 MC



Calcinator



Refractory Lining

Behin Cast 50 to 60 RC

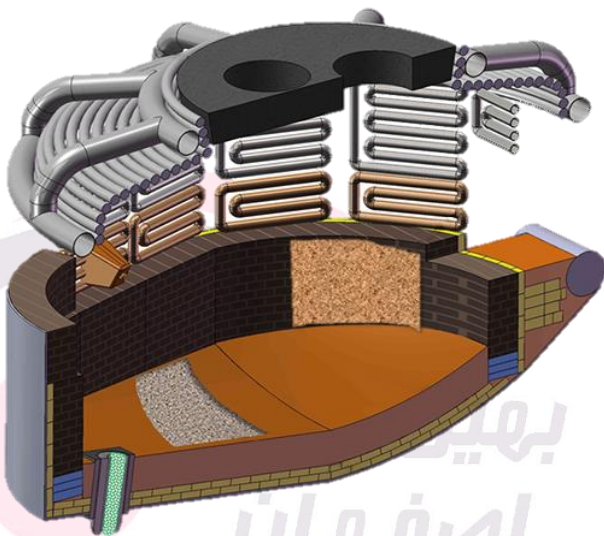
Behin Cast 60 to 70 LC

Insulating Lining

Behin Cast 30 to 35 INS



Electric Arc Furnace (EAF)



Delta

Behin Delta 85 to 96

Tap Hole Sand

Behin EBT

Behin Sand 55

Behin HQ Sand

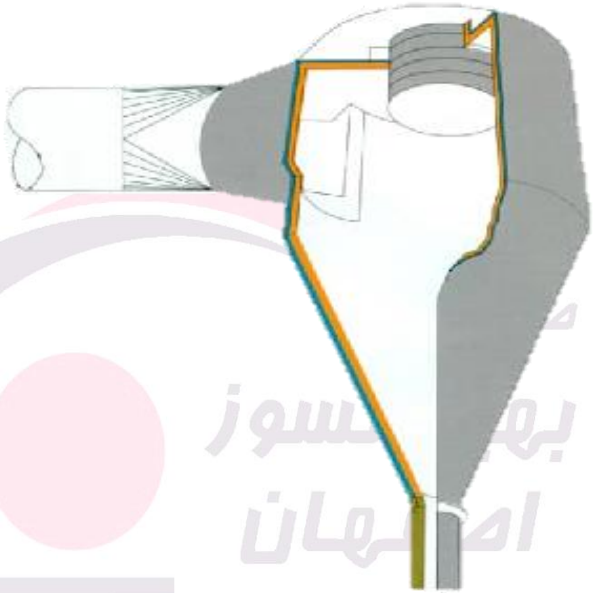
Behin SQ Sand

Behin Sand

Behin Silica Sand



Cyclone



Raw Mill Duct

Behin Cast 60 to 70 LC

Insulating Lining

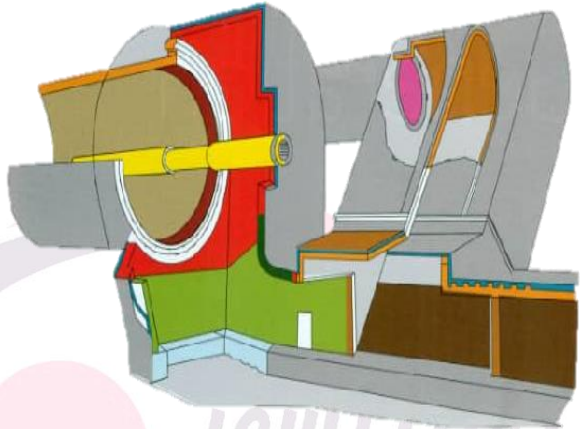
Behin Cast 30 to 35 INS

Cyclone Lining

Behin Cast 45 to 60 RC



Grate Cooler,
Bill Nose,
Tertiary Air,
Burner



Nose Ring

Behin Cast 60 to 70 RC

Behin Cast 60 to 70 LC

Kiln Hood

Behin Cast 60 to 70 RC

Behin Cast 60 to 70 LC

Cooler-Cool Section

Behin Cast 60 to 70 LC

Cooler-Hot Section

Behin Cast 97 LC

Burner

Behin Cast 94 MC

Bull Nose

Behin Cast 60 to 70 LC

Insulating Lining

Behin Cast 30 to 35 INS